

New Entrant / Year One

1/ What was the Maori name of the Buried Village?

T _ W _ _ _ _ .

2/ What colour were the terraces? Choose One

Black and white

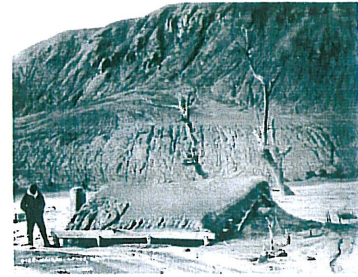
Pink and white

Pink and yellow

3/ Draw a picture of Mount Tarawera Erupting



4/ Match the pictures to the names



A house
covered by
mud

Mt Tarawera
Erupting.

Mt
Tarawera

5/ Draw a picture of a whale that you see on your walk.

