

Year Eleven

Mount Tarawera Eruption 1886

Buried Village - Main Focus = Sequence of events,
effect on the land and people

Information provided in the Museum of Te Wairoa at the Buried Village will help you answer the following:

1. Missing Words

Complete the paragraph below by filling in the missing words. Use the words provided in the box below. Words may only be used once.

Terrace	Te Ariki	18,000	silica	water	Te Wairoa	rhyolite	
Tohunga	basalt	sinter	magma	Moura	Geysers	17	Rotomahana

The Buried Village is the historic site of the Maori settlement called _____. This settlement had a vibrant Maori and European economy. Two hotels supported a booming tourist trade - McRae's Rotomahana Hotel and Humphrey's _____ Hotel.

A key attraction was the nearby Pink and White Terraces on Lake _____. These terraces were made of _____, a _____-rich residue that comes from _____ and hot spring waters.

On the 10th June 1886 Mount Tarawera erupted.
The village _____, Tuhoto Ariki, had predicted destruction of the region days earlier. The Tarawera volcano had been erupting for at least _____ years, however the 1886 eruption was different to those that had occurred earlier. Usually, the magma erupted was _____, but in 1886 the magma was _____.

Although _____ people from the "Buried Village" died, most survived. Inhabitants of nearby villages were not so lucky. There were no survivors amongst those living at _____ -or _____. Most of the damage done at the "Buried Village" was the result of the pyritic eruption of Lake Rotomahana, when rising _____ reached the _____ of the lake causing a violent explosion raining huge quantities of mud and ash down upon the land.

Flow diagram of Events at Te Wairoa - the Buried Village in 1886

- 2. Identify SIX events that occurred IMMEDIATELY BEFORE, DURING and AFTER the Mt Tarawera eruption in 1886 at the village of Te Wairoa. Place these events in the correct sequence on the flow diagram below. FOLLOW THE ARROWS ON THE BOXES CAREFULLY TO GET THE SEQUENCE OF EVENTS IN THE CORRECT ORDER.**

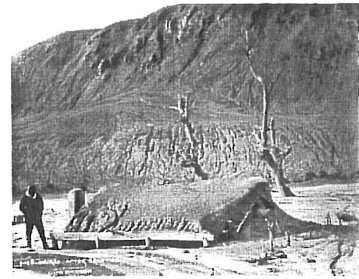
SEQUENCE OF EVENTS AT THE BURIED VILLAGE

1. BEFORE → 2. BEFORE → 3. DURING ↓

6. AFTER ← 5. AFTER ← 4. DURING

- 3. List 6 ways in which people were affected due to the impact of the eruption**

4. What efforts were made to search for and rescue survivors?



5. How was the eruption recorded at the time and how is it remembered now?

6. What type of relief was available to survivors by Government and Maori Groups? Where did most resettlement occur?

7. DESCRIBE three ways in which the eruption AFFECTED THE LAND. Use the display 'A Changed Landscape'.

1.

2.

3.

8. Which buildings were better able to withstand the mud and ash and why? Use the display 'The Aftermath' photos.
